

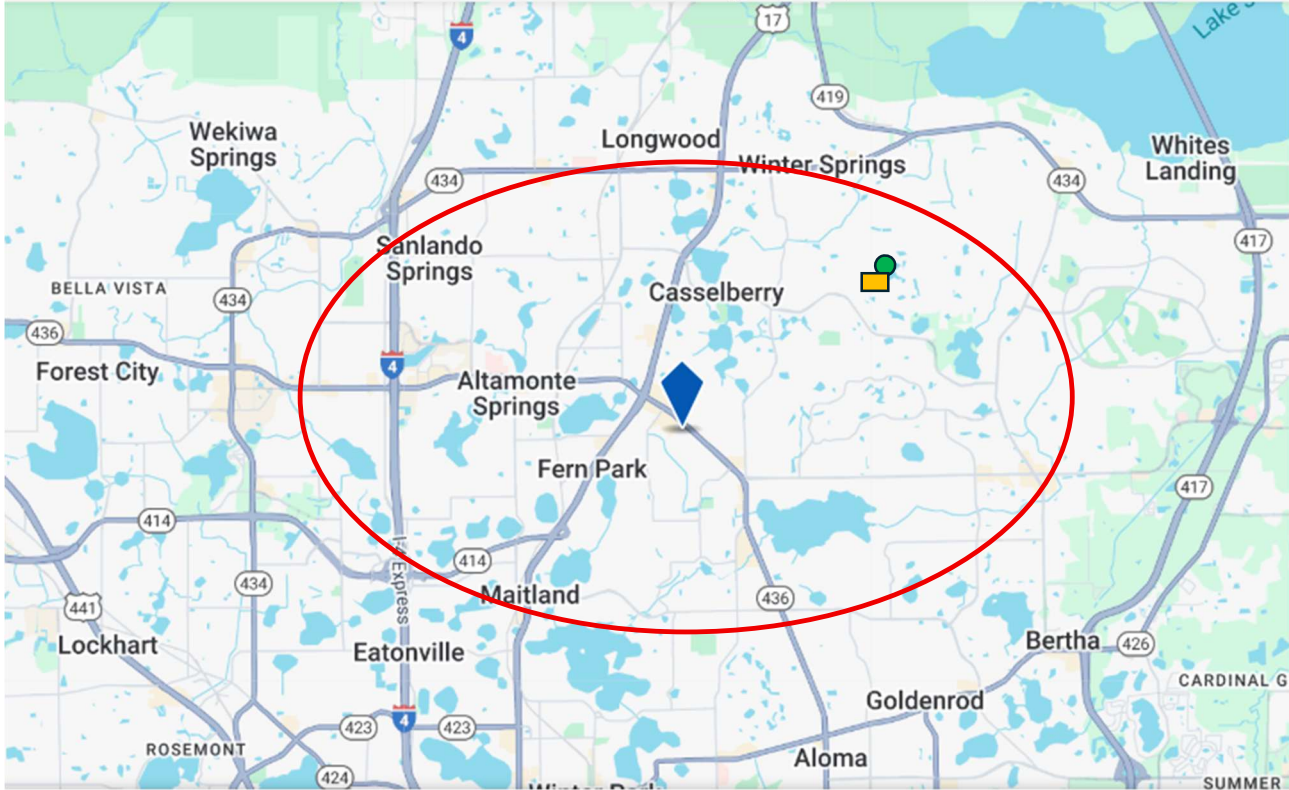
AI Longevity Clinic®

“Corporate Management” - As 8/17/2025

AI Longevity Clinic, Casselberry Trust – No. FL-D3-L1-01

AI Longevity Clinic – “Casselberry Center”

Florida, District 3: Orange County (Orlando)



Front of Building - AI Longevity Center – “Casselberry Center”



489 Semoran Blvd, Bldg. 493, Casselberry (Orlando) FL 32707

AI Longevity Clinic®

“Corporate Management” - As 8/17/2025

AI Longevity Clinic, Casselberry Trust – No. FL-D3-L1-01

Support

Entrance –Double Station



< Front Station - Side >

< Back Station - Side >



Back Station

Ai Longevity Clinic®

“Corporate Management” - As 8/17/2025

Ai Longevity Clinic, Casselberry Trust – No. FL-D3-L1-01

AiLc Community Access Office™ and Med-Level 1 - AiLc Doctor’s Office™

Altamonte Spring – (Nearby Service Access Office – Community Center)



AiLc Access Office – Services Provided

- 1. Patient Intake & Registration**
 - Assistance with enrollment for AiLc Clinics and Programs.
- 2. Medical Monitoring AI Accessories**
 - Distribution and support for wearable AI health devices (smartwatches, biosensors, etc.).
- 3. Remote Health Data Integration**
 - Setup and syncing of patient monitoring devices with AiLc HealthOS™ platform.
- 4. Access Membership Support**
 - Guidance on benefits, co-pays, and personalized health plans.
- 5. Community Resource Assistance**
 - Food bank coordination, wellness kits, and family support services.
- 6. Patient Navigation & Scheduling**
 - Help with appointments, transportation, and referrals to AiLc Centers.
- 7. Wellness & Education Programs**
 - Health literacy workshops, lifestyle coaching, and preventive care guidance.
- 8. Volunteer & Outreach Coordination**
 - Organizing local events, donation drives, and faith/chapel services linked to AiLc Caring Hearts Foundation.